



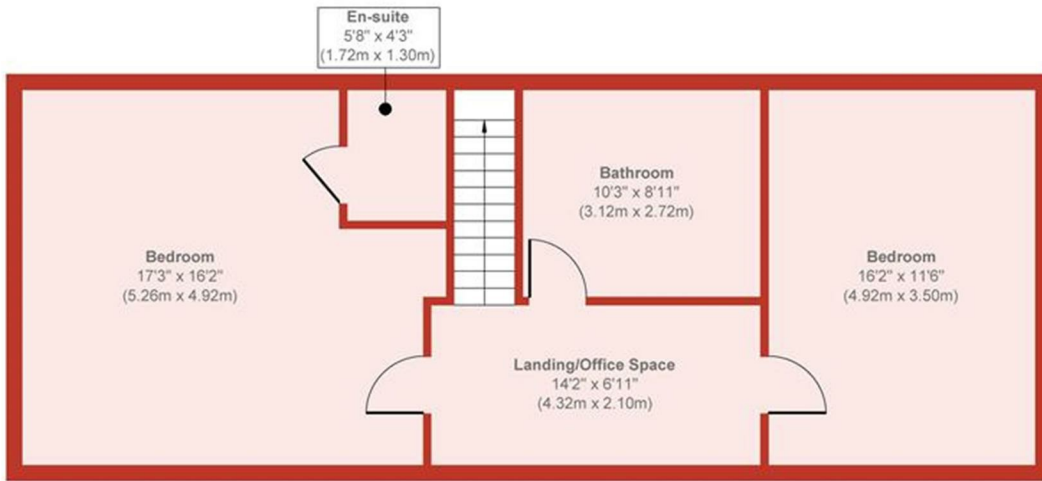
2 Margaret Mews, 63 Cynthia Road, Poole, BH12 3JE

Asking Price £425,000

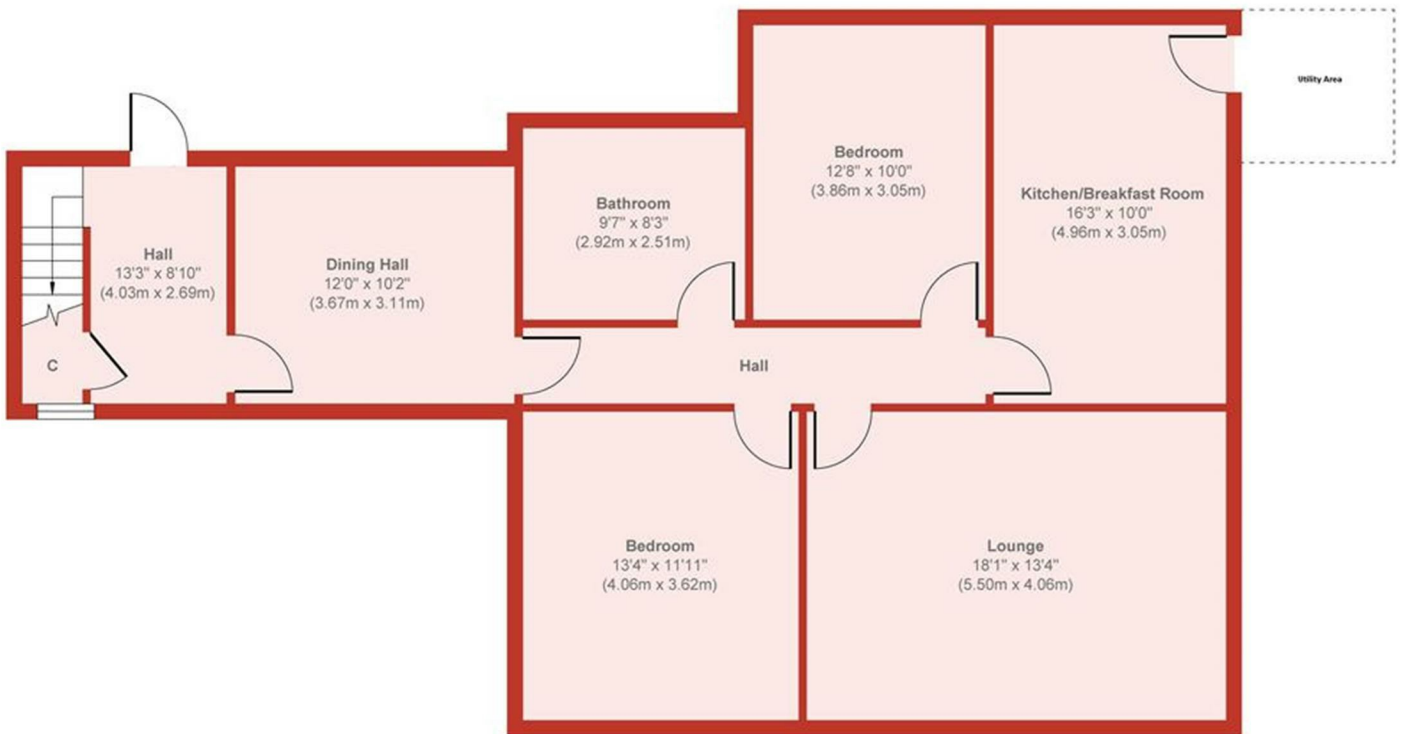
- Four Double Bedrooms
- Lovely Open Plan Kitchen / Breakfast Room
- Well Presented
- UPVC Double Glazing
- Lovely Low Maintenance Rear Garden
- Two Reception Rooms & Additional Office
- Three Bathrooms
- Approximately 1850 sqft
- Gas Central Heating
- Off Road Parking

WELL PREENTED & SPACIOUS FOUR DOUBLE BEDROOM CHALET STYLE BUNGALOW WITH THREE BATHROOMS AND THREE RECEPTION ROOMS >>> Greys Estate Agents are delighted to offer for sale this very spacious chalet style bungalow situated in a tucked away position off Cynthia Road in Parkstone, Poole. The property comprises: Four double bedrooms, good size lounge, an open plan kitchen / breakfast room, additional dining room / reception, en-suite shower room to bedroom one, two additional bathrooms, utility room, a lovely low maintenance rear garden and off road parking for a couple of vehicles and an electric charge point.





**First Floor**  
Approximate Floor Area  
703 sq. ft  
(65.33 sq. m)

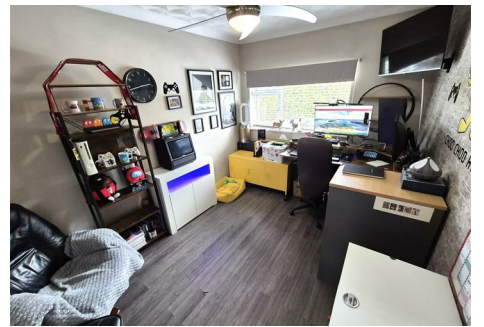


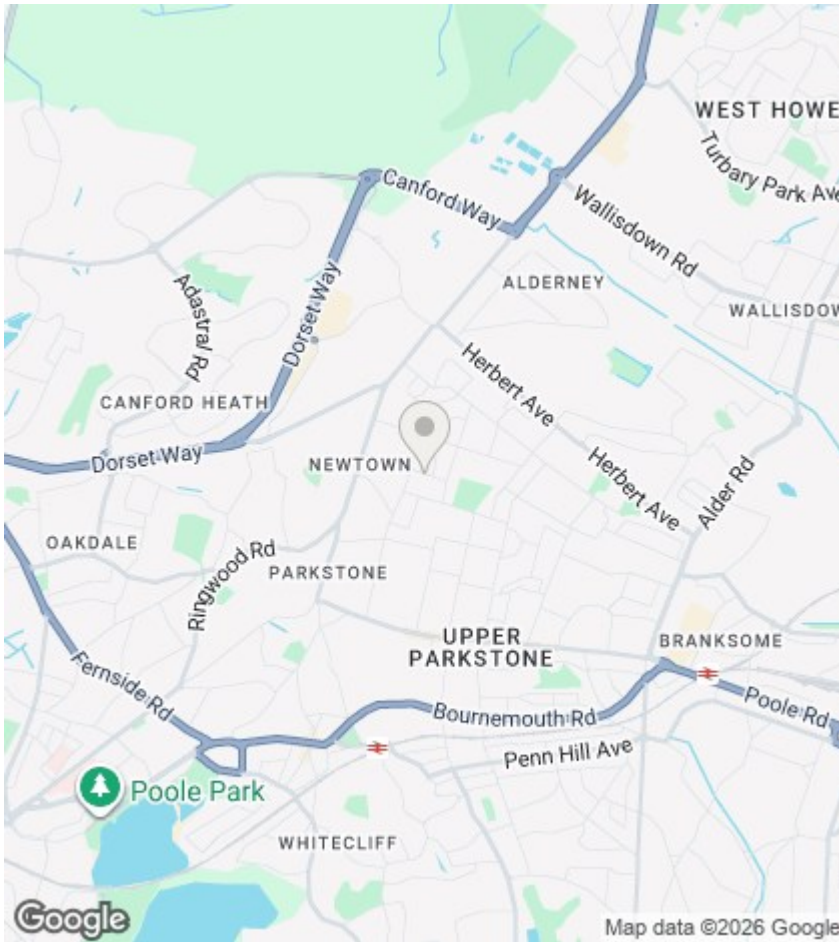
**Ground Floor**  
Approximate Floor Area  
1080 sq. ft  
(100.41 sq. m)

**Approx. Gross Internal Floor Area 1783 sq. ft / 165.41 sq. m**

Produced by Elements Property







## Agents note

Whilst every attempt has been made to ensure the accuracy of details and measurements contained in these particulars, they are not to be relied upon especially when potential cost could be incurred. No appliances have been tested so the agent cannot verify that they are in working order. The agent has not seen any legal documentation to verify the legal status of the property. This must be verified by your chosen solicitor.

## Viewings

Viewings by arrangement only. Call 01202 749390 to make an appointment.

## EPC Rating:

D

Energy Efficiency Rating		Current	Potential
Very energy efficient - lower running costs			
(92 plus)	A		
(81-91)	B		
(69-80)	C		
(55-68)	D	67	75
(39-54)	E		
(21-38)	F		
(1-20)	G		
Not energy efficient - higher running costs			
England & Wales		EU Directive 2002/91/EC	

